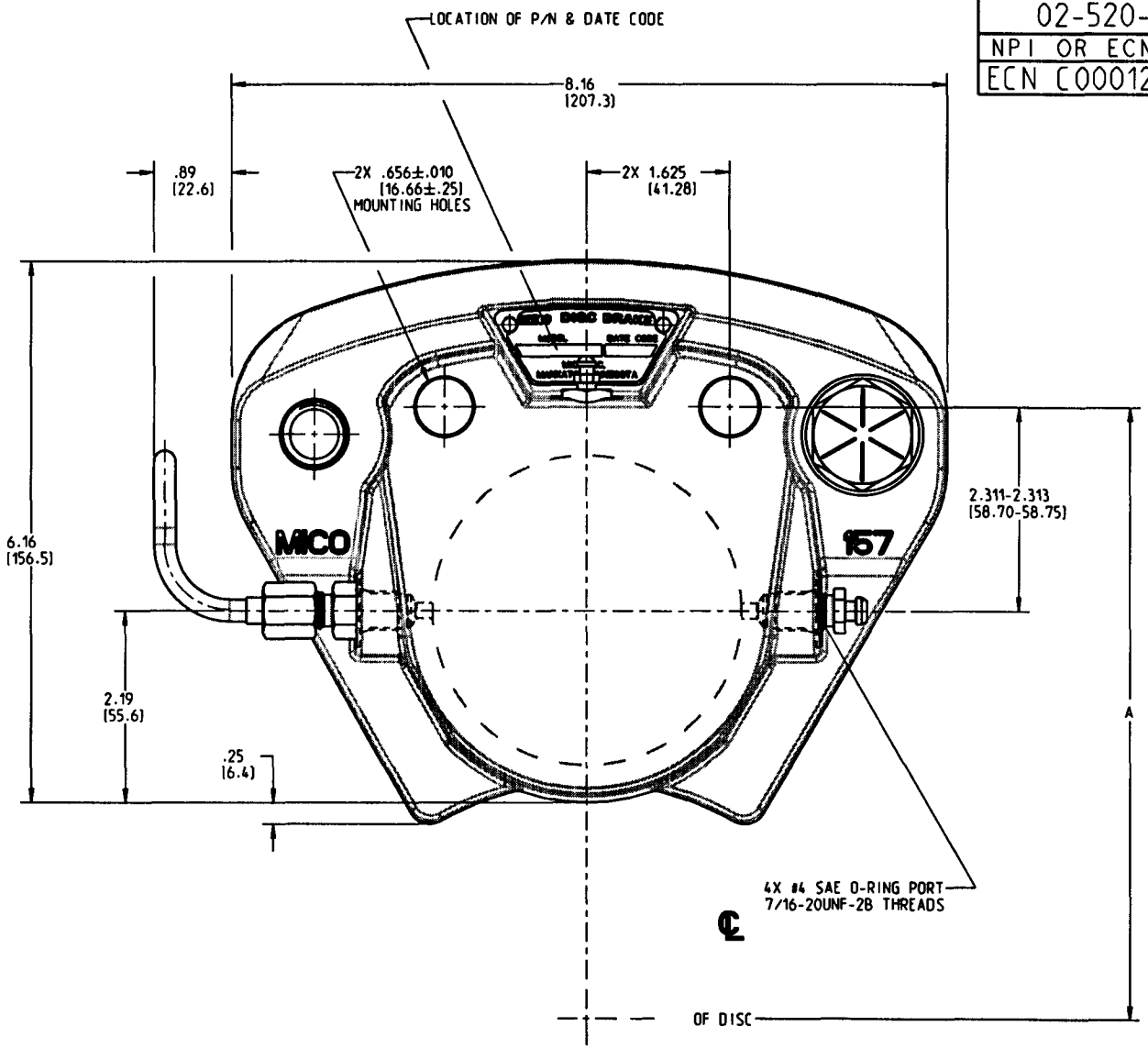
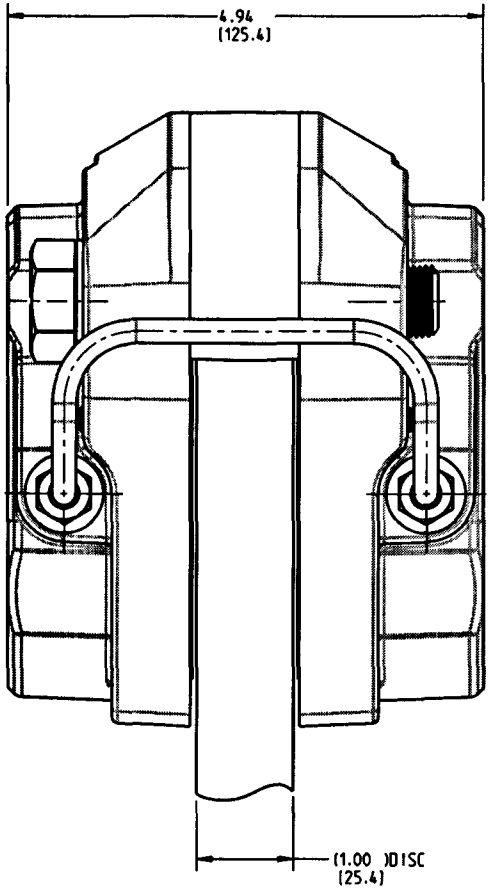


PART NUMBER  
02-520-265  
NPI OR ECN NO.  
ECN C000120



**NOTES:**

- 1) FOR USE WITH DOT 3, 4 OR 5 BRAKE FLUID ONLY.
- 2) DIMENSIONS MAY VARY SLIGHTLY BETWEEN UNITS AND ARE TO BE USED FOR REFERENCE PURPOSES ONLY.
- 3) REPAIR KIT P/N 02-500-131.
- 4) LINING KIT P/N 20-060-013.

**PERFORMANCE CHARACTERISTICS:**

- 1) DISC DIAMETER: 12.00 TO 36.00.
- 2) DISC THICKNESS: 1.000.
- 3) "A" DIMENSION = DISC RADIUS + .62.
- 4) MAXIMUM INPUT PRESSURE: 2000 PSI CONTINUOUS, 2500 PSI INTERMITTENT.
- 5) BRAKE TORQUE: BT (LBIN) = 6.72 X PSI X (DISC RADIUS-2.00).
- 6) CAUTION: DISC RUBBING SPEED SHOULD NOT EXCEED 5000 FT./MIN.

COMPONENT AND SYSTEM RECOMMENDATIONS MADE BY MICO, INC. ARE BASED ON INFORMATION SUPPLIED BY POTENTIAL USER AND/OR SYSTEM DESIGNER. THE POTENTIAL USER AND/OR DESIGNER MUST MAKE FINAL ACCEPTANCE AND APPROVAL OF COMPONENTS AND SYSTEM AFTER TESTING PERFORMANCE ON AN ACTUAL APPLICATION FOR WHICH SYSTEM WAS DESIGNED.

MICO, INC. CLAIMS PROPRIETARY RIGHTS TO THE MATERIAL DISCLOSED IN THIS DOCUMENT. THIS DOCUMENT IS PROVIDED IN CONFIDENCE AND MAY NOT BE REPRODUCED OR DISCLOSED WITHOUT WRITTEN PERMISSION FROM MICO, INC. COPYRIGHT MICO, INC. ALL RIGHTS RESERVED.

**INCH  
(MILLIMETER)**



TITLE			
DISC BRAKE			
SCALE	CHECKED	PART NUMBER	REV
0.500	<i>ASJ</i>	02-520-265	C
DRN JRA	APP ENG	CUSTOMER COPY 2 <sup>1</sup>	
21-Mar-02	<i>ADA 3/22/02</i>		