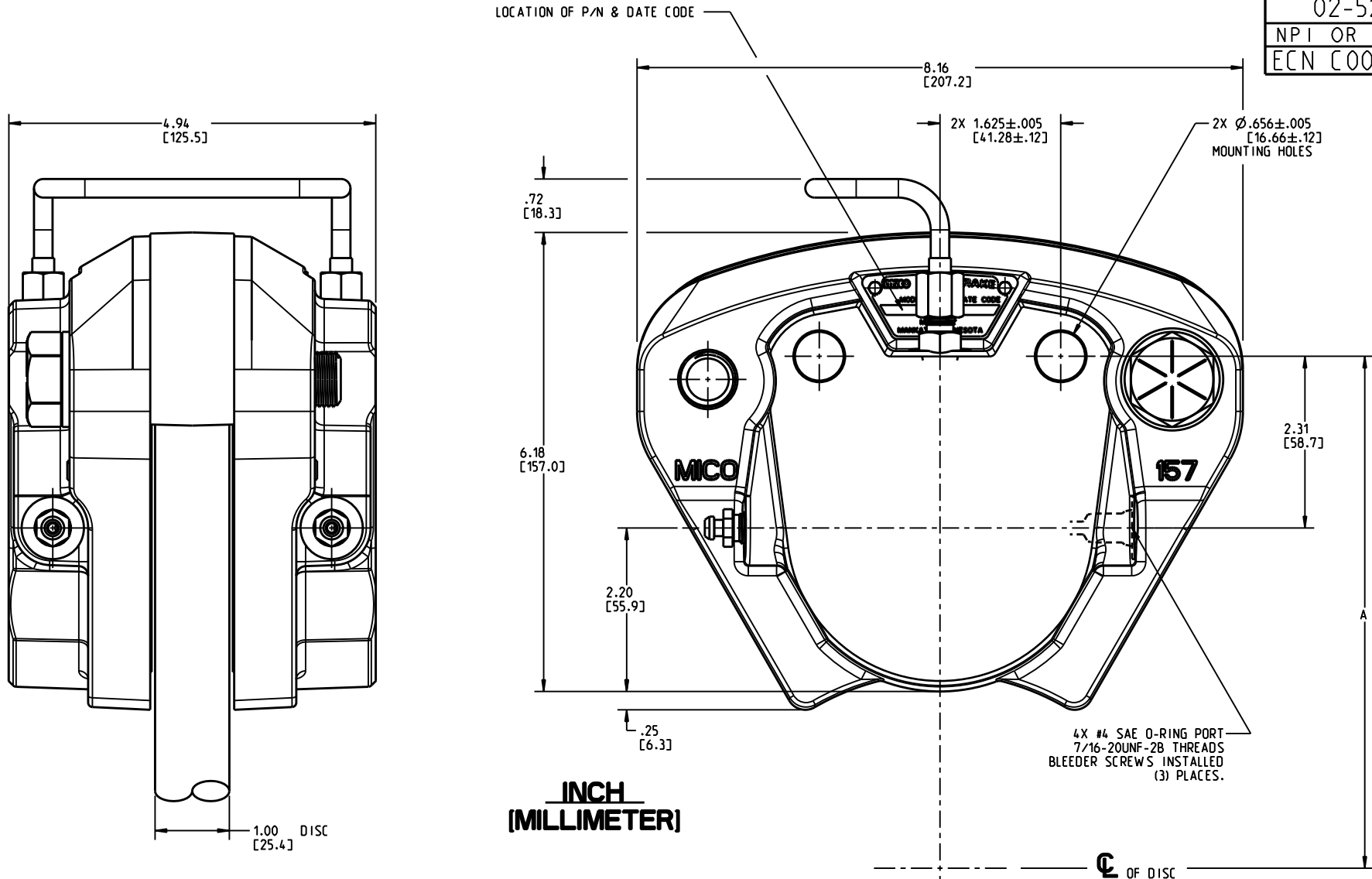


DRAWING NUMBER
02-520-264
NPI OR ECN NO
ECN C000442



NOTES:

- 1) FOR USE WITH MINERAL BASE HYDRAULIC OIL ONLY.
- 2) DIMENSIONS WITHOUT TOLERANCE MAY VARY BETWEEN UNITS AND ARE TO BE USED FOR REFERENCE PURPOSES ONLY. MILLIMETER VALUES MAY NOT BE AN EXACT CONVERSION OF INCH VALUES.
- 3) REPAIR KIT P/N 02-500-132.
- 4) LINING KIT P/N 20-060-013.

PERFORMANCE CHARACTERISTICS:

- 1) DISC DIAMETER: 12.00 TO 36.00 IN.
- 2) DISC THICKNESS: 1.000 IN.
- 3) "A" DIMENSION = DISC RADIUS + .62 IN.
- 4) MAXIMUM INPUT PRESSURE: 2000 PSI CONTINUOUS.
2500 PSI INTERMITTENT.
- 5) BRAKE TORQUE: Bt (LBIN) = 6.72 X PSI X (DISC RADIUS-2.00).
- 6) CAUTION: DISC RUBBING SPEED SHOULD NOT EXCEED 5000 FT./MIN.

COMPONENT AND SYSTEM RECOMMENDATIONS MADE BY MICO, INC ARE BASED ON INFORMATION SUPPLIED BY POTENTIAL USER AND/OR SYSTEM DESIGNER. THE POTENTIAL USER AND/OR DESIGNER MUST MAKE FINAL ACCEPTANCE AND APPROVAL OF COMPONENTS AND SYSTEM AFTER TESTING PERFORMANCE ON AN ACTUAL APPLICATION FOR WHICH SYSTEM WAS DESIGNED.

MICO, INC CLAIMS PROPRIETARY RIGHTS TO THE MATERIAL DISCLOSED IN THIS DOCUMENT. THIS DOCUMENT IS PROVIDED IN CONFIDENCE AND MAY NOT BE REPRODUCED OR DISCLOSED WITHOUT WRITTEN PERMISSION FROM MICO, INC. COPYRIGHT MICO, INC. ALL RIGHTS RESERVED.



SCALE 0.500	TITLE DISC BRAKE			
DWN MAP 2011-12-29	APVD PROD ENGRG DPD 2012-01-12	SIZE A	DRAWING NUMBER 02-520-264	REV E
X NO	APVD ENGRG BSW 2011-12-29	CUSTOMER COPY		1 2