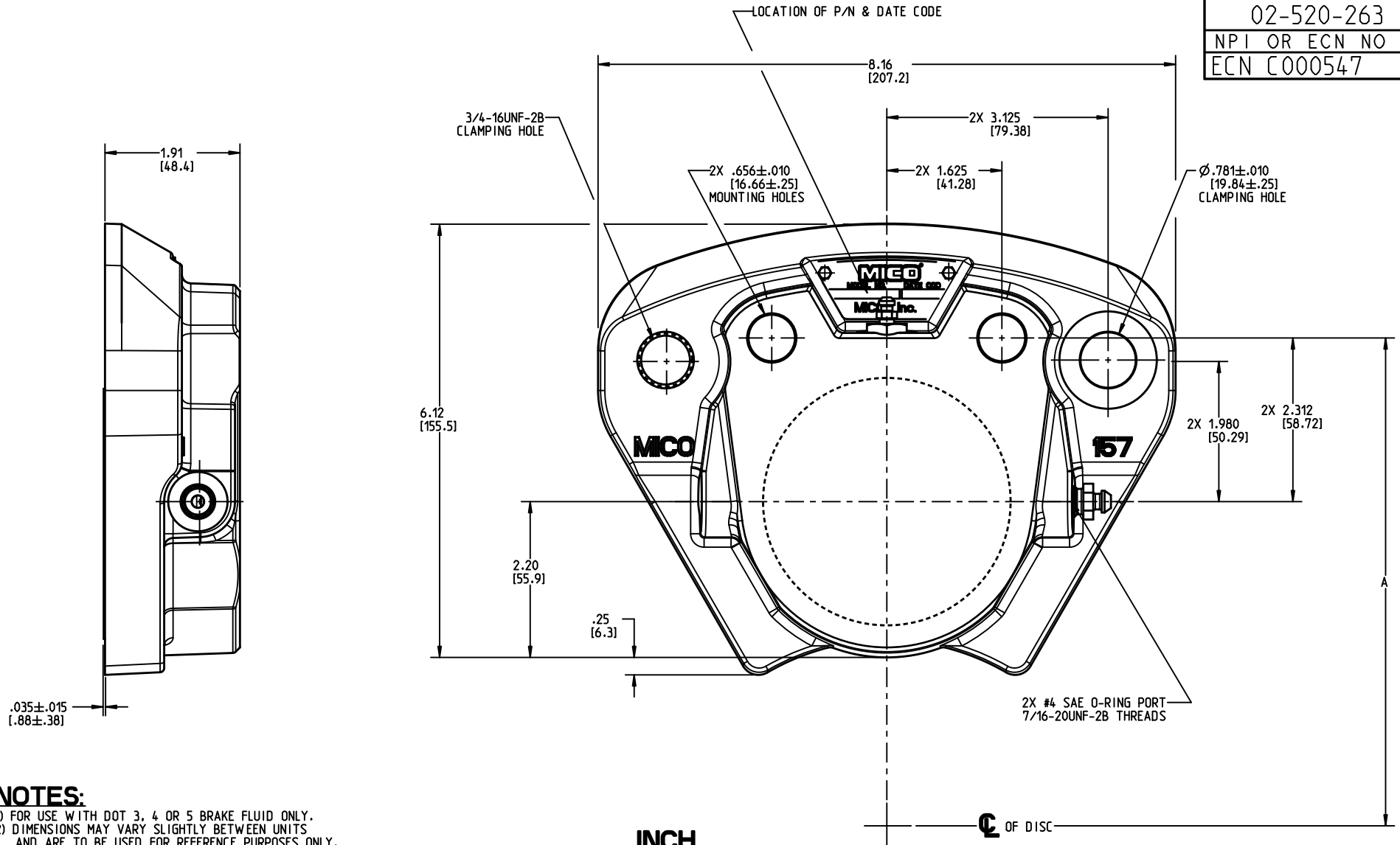


DRAWING NUMBER
02-520-263
NPI OR ECN NO
ECN C000547



INCH
(MILLIMETER)

NOTES:

- 1) FOR USE WITH DOT 3, 4 OR 5 BRAKE FLUID ONLY.
- 2) DIMENSIONS MAY VARY SLIGHTLY BETWEEN UNITS AND ARE TO BE USED FOR REFERENCE PURPOSES ONLY.
- 3) REPAIR KIT P/N 02-500-131.
- 4) LINING KIT P/N 20-060-013.
- 5) CLAMPING HOLES- USE GRADE 8, 3/4-16UNF-2A BOLTS, AND HEAT TREATED FLAT WASHERS. TORQUE TO BE 285-315 LBFT.
- 6) MOUNTING HOLES- USE GRADE 8, 5/8-18UNF-2A BOLTS, AND HEAT TREATED FLAT WASHERS. TORQUE TO BE 190-200 LBFT.

PERFORMANCE CHARACTERISTICS:

- 1) DISC DIAMETER: 12.00 TO 36.00.
- 2) DISC THICKNESS: DEPENDENT ON SPACER THICKNESS.
- 3) "A" DIMENSION = DISC RADIUS + .62.
- 4) MAXIMUM INPUT PRESSURE: 2000 PSI CONTINUOUS, 2500 PSI INTERMITTENT.
- 5) BRAKE TORQUE: Ft (LBIN) = 3.36 X PSI X (DISC RADIUS-2.00).
- 6) CAUTION: DISC RUBBING SPEED SHOULD NOT EXCEED 5000 FT./MIN.

MICO, INC CLAIMS PROPRIETARY RIGHTS TO THE MATERIAL DISCLOSED IN THIS DOCUMENT. THIS DOCUMENT IS PROVIDED IN CONFIDENCE AND MAY NOT BE REPRODUCED OR DISCLOSED WITHOUT WRITTEN PERMISSION FROM MICO, INC. COPYRIGHT MICO, INC. ALL RIGHTS RESERVED.

MICO®

North Mankato, Minnesota USA

COMPONENT AND SYSTEM RECOMMENDATIONS MADE BY MICO, INC ARE BASED ON INFORMATION SUPPLIED BY POTENTIAL USER AND/OR SYSTEM DESIGNER. THE POTENTIAL USER AND/OR DESIGNER MUST MAKE FINAL ACCEPTANCE AND APPROVAL OF COMPONENTS AND SYSTEM AFTER TESTING PERFORMANCE ON AN ACTUAL APPLICATION FOR WHICH SYSTEM WAS DESIGNED.

SCALE 0.500	TITLE DISC BRAKE HALF		
DWN JRA 2015-02-10	APVD PROD ENGRG DPD 2015-02-16	SIZE A	DRAWING NUMBER 02-520-263
X NO X5450	APVD ENGRG BSW 2015-02-11		REV D
		CUSTOMER COPY	