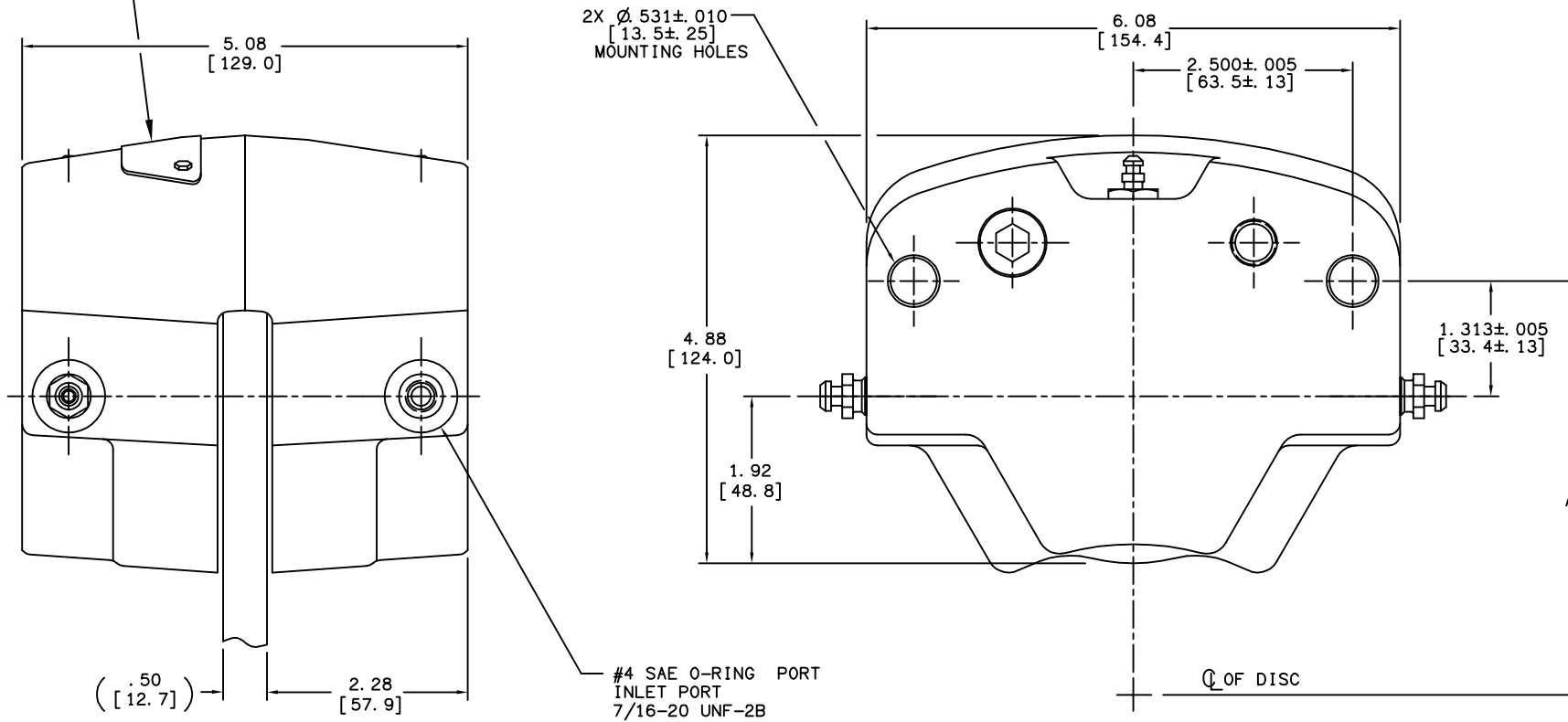


DRAWING NUMBER
02-520-201
NPI OR ECN NO
ECN C000258

LOCATION OF DATE CODE
AND MICO P/N



INCH
MILLIMETER

NOTES:

1. FOR USE WITH DOT 3, 4 OR 5 BRAKE FLUID ONLY.
2. DIMENSIONS MAY VARY SLIGHTLY BETWEEN UNITS AND ARE TO BE USED FOR REFERENCE PURPOSES ONLY.
3. REPAIR KIT P/N 02-500-043.
4. LINING KIT P/N 20-060-087.

PERFORMANCE CHARACTERISTICS:

1. ALL DIMENSIONS IN INCHES UNLESS OTHERWISE SPECIFIED.
2. DISC DIAMETER: 10.00 TO 24.00.
3. DISC THICKNESS: .500.
4. MAXIMUM INPUT PRESSURE: 1500 PSI (2000 PSI INTERMITTENT).
5. BRAKE TORQUE: Bt (LBIN) = 3.43 X PSI X (DISC RADIUS-1.25).
6. CAUTION: DISC RUBBING SPEED SHOULD NOT EXCEED 5000 FT./MIN.

DISC DIA.	DIM. "A"
10	5
12	6
14	7.13
16	8.13
18	9.19
20	10.19
24	12.31

COMPONENT AND SYSTEM RECOMMENDATIONS MADE BY MICO, INC. ARE BASED ON INFORMATION SUPPLIED BY POTENTIAL USER AND/OR SYSTEM DESIGNER. THE POTENTIAL USER AND/OR DESIGNER MUST MAKE FINAL ACCEPTANCE AND APPROVAL OF COMPONENTS AND SYSTEM AFTER TESTING PERFORMANCE ON AN ACTUAL APPLICATION FOR WHICH SYSTEM WAS DESIGNED.



North Mankato, Minnesota USA

MICO, INC CLAIMS PROPRIETARY RIGHTS TO THE MATERIAL DISCLOSED IN THIS DOCUMENT. THIS DOCUMENT IS PROVIDED IN CONFIDENCE AND MAY NOT BE REPRODUCED OR DISCLOSED WITHOUT WRITTEN PERMISSION FROM MICO, INC. COPYRIGHT MICO, INC. ALL RIGHTS RESERVED.

SCALE	TITLE	SIZE	DRAWING NUMBER	REV
1/2 TO 1	DISC BRAKE	A	02-520-201	J
DWN SEYS 3-7-06	APVD PROD ENGRG DF			
X NO	APVD ENGRG BSW		CUSTOMER COPY	