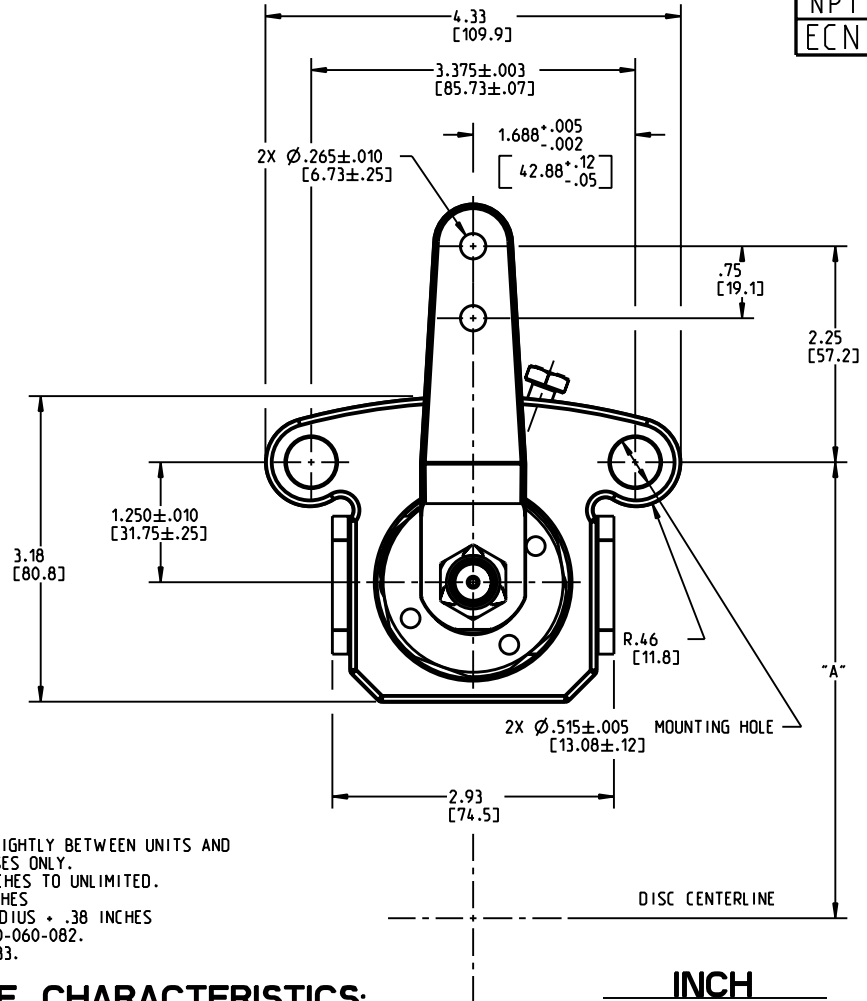
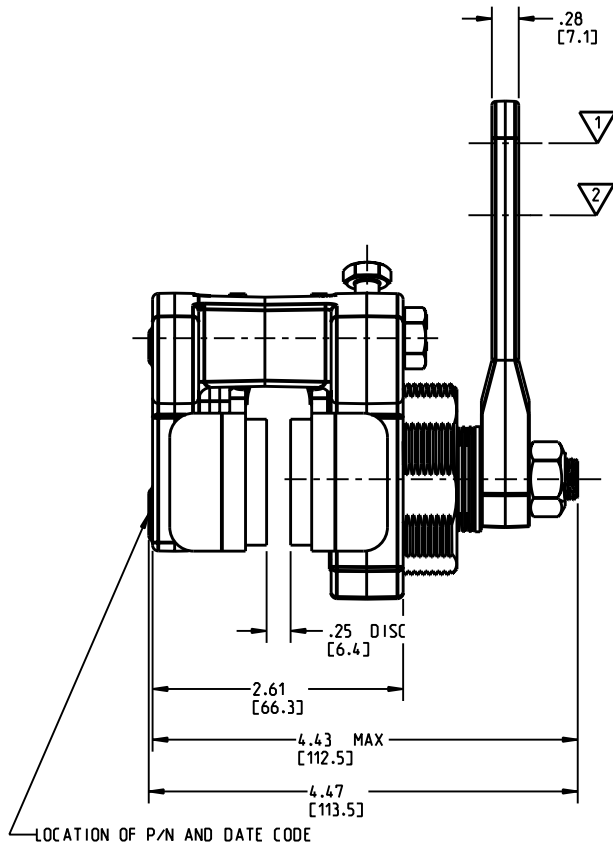


DRAWING NUMBER  
02-515-175  
NPI OR ECN NO  
ECN C000221



**NOTES:**

1. DIMENSIONS WILL VARY SLIGHTLY BETWEEN UNITS AND ARE FOR REFERENCE PURPOSES ONLY.
2. DISC DIAMETER: 6.00 INCHES TO UNLIMITED.
3. DISC THICKNESS: .25 INCHES
4. "A" DIMENSION = DISC RADIUS + .38 INCHES
5. LINING REPAIR KIT P/N 20-060-082.
6. REPAIR KIT P/N 02-500-133.

**PERFORMANCE CHARACTERISTICS:**

1. BRAKE TORQUE FORMULA WHEN LEVER PULL IS APPLIED AT:
  - ▽1: BRAKE TORQUE:  $BT (LBIN) = 13.61 \times \text{LEVER PULL} \times (\text{DISC RADIUS} - 1.00)$ .
  - ▽2: BRAKE TORQUE:  $BT (LBIN) = 10.69 \times \text{LEVER PULL} \times (\text{DISC RADIUS} - 1.00)$ .
2. MAXIMUM BRAKE LEVER PULL NOT TO EXCEED:
  - 330 LB WHEN APPLIED AT ▽1
  - 420 LB WHEN APPLIED AT ▽2
3. MAXIMUM TORQUE IS ACHIEVED ONLY AFTER BRAKE HAS BEEN PROPERLY ADJUSTED AND BURNISHED.
4. **CAUTION:** DISC RUBBING SPEED NOT TO EXCEED 5000 FT/MIN IF BRAKE IS USED DYNAMICALLY.

**INCH**  
**(MILLIMETER)**



COMPONENT AND SYSTEM RECOMMENDATIONS MADE BY MICO, INC ARE BASED ON INFORMATION SUPPLIED BY POTENTIAL USER AND/OR SYSTEM DESIGNER. THE POTENTIAL USER AND/OR DESIGNER MUST MAKE FINAL ACCEPTANCE AND APPROVAL OF COMPONENTS AND SYSTEM AFTER TESTING PERFORMANCE ON AN ACTUAL APPLICATION FOR WHICH SYSTEM WAS DESIGNED.

MICO, INC CLAIMS PROPRIETARY RIGHTS TO THE MATERIAL DISCLOSED IN THIS DOCUMENT. THIS DOCUMENT IS PROVIDED IN CONFIDENCE AND MAY NOT BE REPRODUCED OR DISCLOSED WITHOUT WRITTEN PERMISSION FROM MICO, INC. COPYRIGHT MICO, INC. ALL RIGHTS RESERVED.

SCALE 0.500	TITLE MECHANICAL BRAKE			
DWN MAP 27-Oct-04	APVD PROD ENGRG	SIZE A	DRAWING NUMBER 02-515-175	REV H
X NO	APVD ENGRG JC		CUSTOMER COPY	4 2