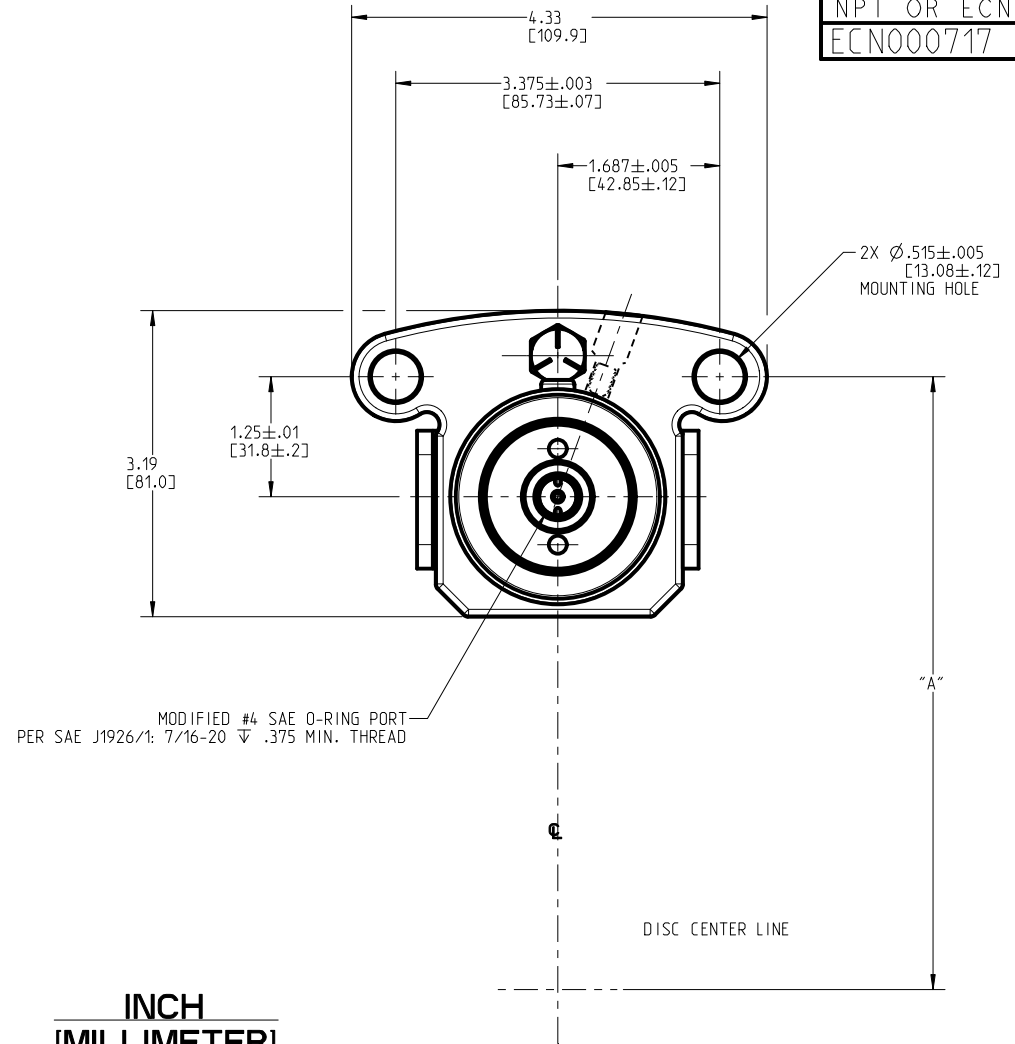
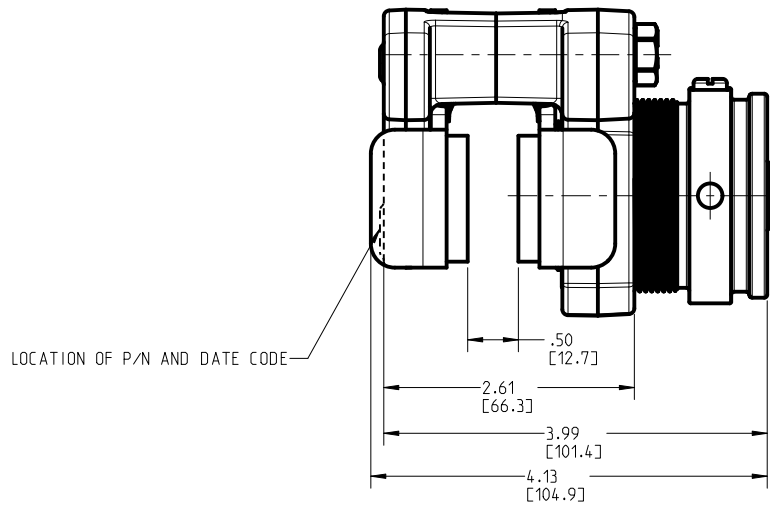


DRAWING NUMBER
02-515-005
NPI OR ECN NO
ECN000717



NOTES:

1. TO BE USED WITH DOT 3, 4 OR 5 BRAKE FLUID ONLY.
2. DIMENSIONS WITHOUT TOLERANCE MAY VARY BETWEEN UNITS AND ARE TO BE USED FOR REFERENCE PURPOSES ONLY. MILLIMETER VALUES MAY NOT BE AN EXACT CONVERSION OF INCH VALUES.
3. DISC DIAMETER: 6.00 [152.4] TO UNLIMITED
4. DISC THICKNESS: .50 [12.7]
5. "A" DIMENSION = DISC RADIUS + 0.38
6. SEAL KIT P/N 02-500-037.
7. REPAIR P/N 02-500-194.
8. LINING KIT P/N 20-060-082.

PERFORMANCE CHARACTERISTICS:

1. BRAKE TORQUE: Bt (LBS-IN) = 1150 X (DISC RADIUS - 1.00)
2. RELEASE PRESSURE: 1700 PSI [117.2 bar]
3. **CAUTION:** CONTINUOUS DUTY PRESSURE-2000 PSI [137.9 bar]
INTERMITTENT DUTY PRESSURE-2500 PSI [172.4 bar]
4. **CAUTION:** DISC RUBBING SPEED SHOULD NOT EXCEED 5000 FT./MIN.
IF BRAKE IS USED DYNAMICALLY
5. 200 PSI [13.8 bar] MAX. BLEEDING PRESSURE.
6. MAXIMUM TORQUE ACHIEVED ONLY AFTER BRAKE HAS BEEN PROPERLY ADJUSTED AND BURNISHED.

INCH
[MILLIMETER]



COMPONENT AND SYSTEM RECOMMENDATIONS MADE BY MICO, INC. ARE BASED ON INFORMATION SUPPLIED BY POTENTIAL USER AND/OR SYSTEM DESIGNER. THE POTENTIAL USER AND/OR DESIGNER MUST MAKE FINAL ACCEPTANCE AND APPROVAL OF COMPONENTS AND SYSTEM AFTER TESTING PERFORMANCE ON AN ACTUAL APPLICATION FOR WHICH SYSTEM WAS DESIGNED.

MICO, INC. CLAIMS PROPRIETARY RIGHTS TO THE MATERIAL DISCLOSED IN THIS DOCUMENT. THIS DOCUMENT IS PROVIDED IN CONFIDENCE AND MAY NOT BE REPRODUCED OR DISCLOSED WITHOUT WRITTEN PERMISSION FROM MICO, INC. COPYRIGHT MICO, INC. ALL RIGHTS RESERVED.

SCALE 0.500		TITLE SPRING BRAKE			
DWN MG 2017-06-02	APVD PROD ENGRG MG 2018-04-25	SIZE A	DRAWING NUMBER 02-515-005	REV S	
X NO	APVD ENGRG CL 2017-09-02		CUSTOMER COPY	2	2