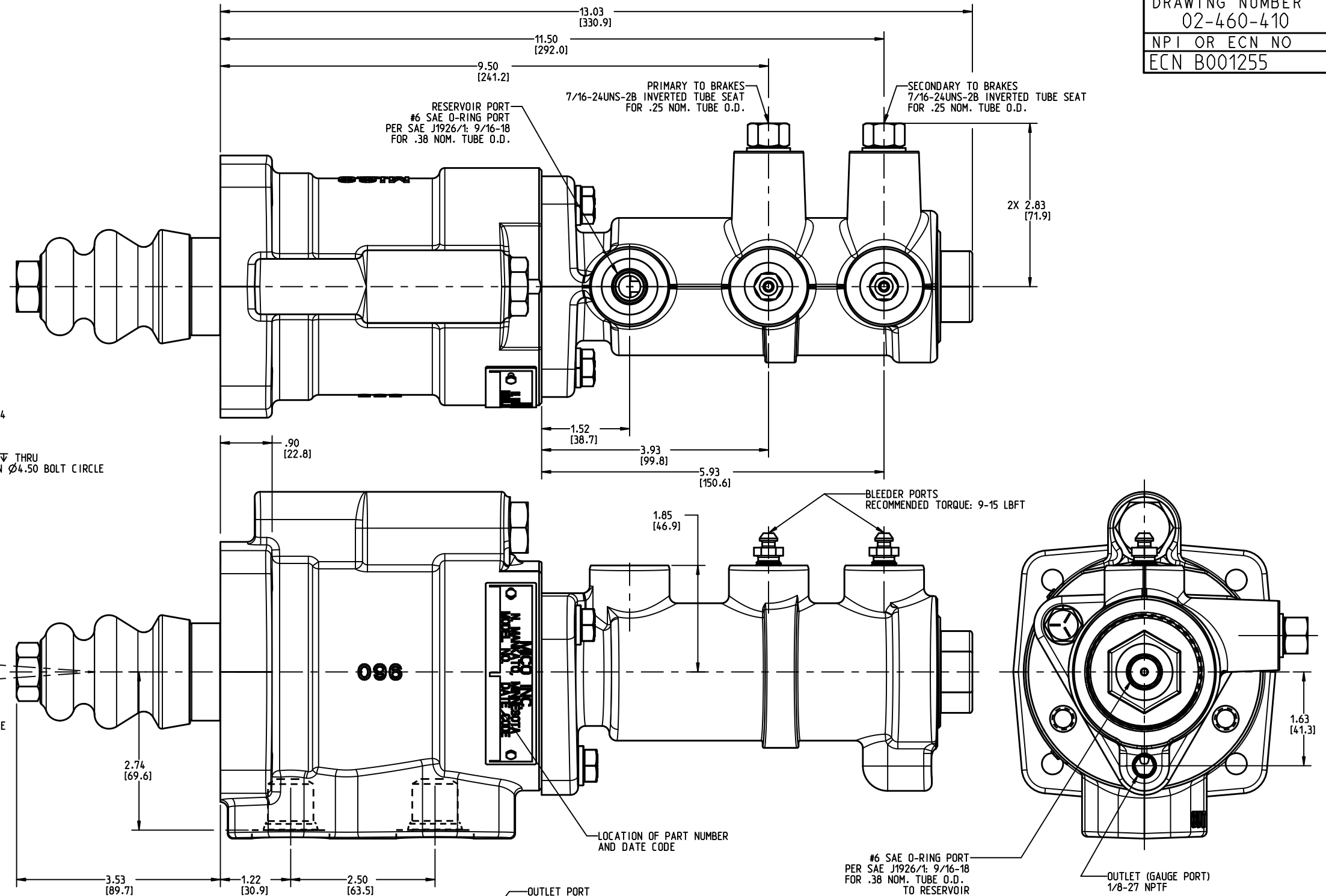
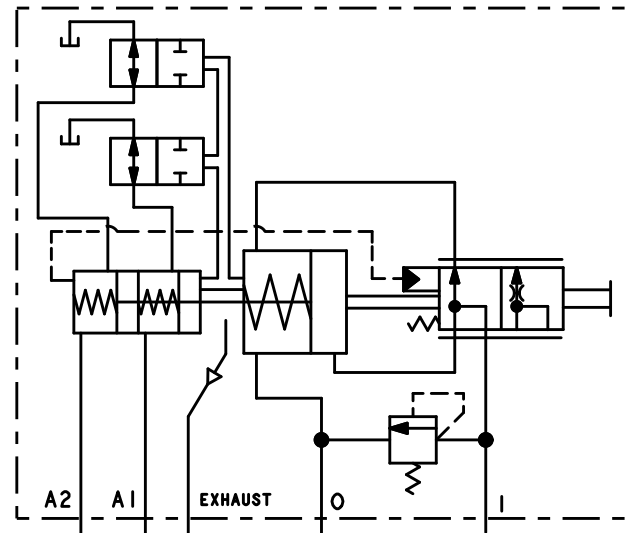


DRAWING NUMBER
02-460-410
NPI OR ECN NO
ECN B001255



NOTES:

- 1) DIMENSION MAY VARY BETWEEN UNITS AND ARE FOR REFERENCE PURPOSES ONLY. MILLIMETER VALUES MAY NOT BE AN EXACT CONVERSION OF INCH VALUES.
- 2) BOOSTER SECTION P/N: 20-100-292.
- 3) BOOSTER SECTION FOR USE WITH MINERAL BASE HYDRAULIC OIL ONLY.
- 4) BOOSTER SECTION REPAIR KIT P/N 02-400-182.
- 5) MASTER CYLINDER SECTION P/N: 20-100-291.
- 6) MASTER CYLINDER SECTION FOR USE WITH DOT 3, 4 OR 5 BRAKE FLUID ONLY.
- 7) MASTER CYLINDER REPAIR KIT P/N 02-400-185.
- 8) SURFACE FINISH: OLIVE DRAB PRIMER PER DOD-P-15328 SPECIFICATION.

PERFORMANCE CHARACTERISTICS:

- 1) MASTER CYLINDER SECTION OUTPUT PRESSURE: 1230±50 PSI @ 10 GPM
- 2) RELIEF VALVE PRESSURE (BOOSTER SECTION): 420±10 PSI @ 10 GPM AT 120 °F OIL TEMPERATURE.
- 3) INPUT FORCE (POWER) APPROXIMATE: 350 LBS. @ 1230 PSI.
- 4) FLUID DISPLACEMENT:
1.62 CU. IN. PRIMARY
1.62 CU. IN. SECONDARY
- 5) PUSH ROD TRAVEL: 1.62 IN.

INLET PORT #10 SAE O-RING PORT PER SAE J1926/1: 7/8-14 .63 NOM. TUBE-INLET

COMPONENT AND SYSTEM RECOMMENDATIONS MADE BY MICO, INC ARE BASED ON INFORMATION SUPPLIED BY POTENTIAL USER AND/OR SYSTEM DESIGNER. THE POTENTIAL USER AND/OR DESIGNER MUST MAKE FINAL ACCEPTANCE AND APPROVAL OF COMPONENTS AND SYSTEM AFTER TESTING PERFORMANCE ON AN ACTUAL APPLICATION FOR WHICH SYSTEM WAS DESIGNED.

MICO, INC CLAIMS PROPRIETARY RIGHTS TO THE MATERIAL DISCLOSED IN THIS DOCUMENT. THIS DOCUMENT IS PROVIDED IN CONFIDENCE AND MAY NOT BE REPRODUCED OR DISCLOSED WITHOUT WRITTEN PERMISSION FROM MICO, INC. COPYRIGHT MICO, INC. ALL RIGHTS RESERVED.

INCH
[MILLIMETER]

<p>North Mankato, Minnesota USA</p>		SCALE		
		0.500	TITLE	
POWER BRAKE VALVE		SIZE	DRAWING NUMBER	REV
DWN JRA 2015-04-15	APVD PROD ENGRG DPD 2015-04-20	B	02-460-410	D
X NO	APVD ENGRG BSW 2015-04-17		CUSTOMER COPY	2 2