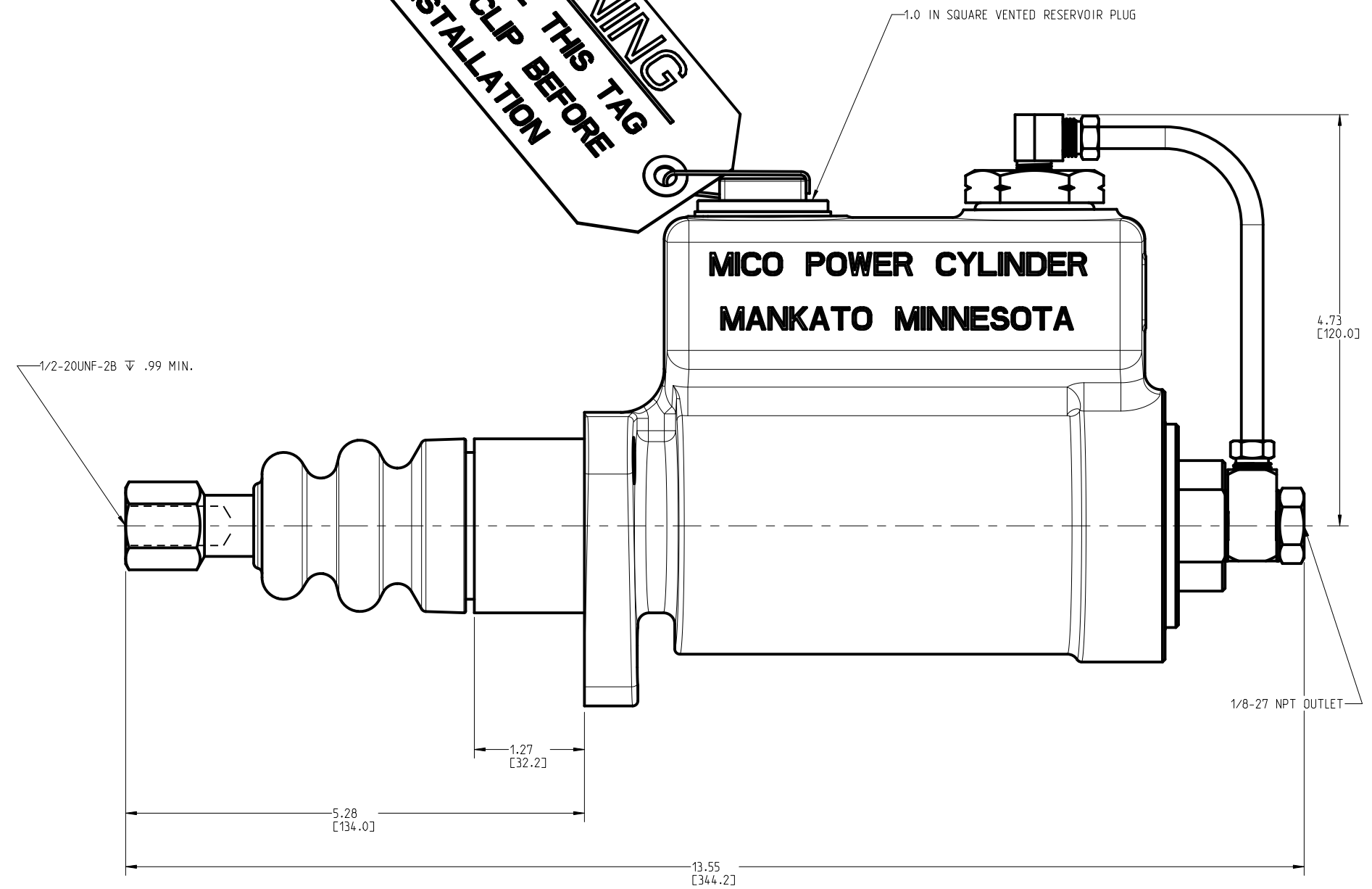
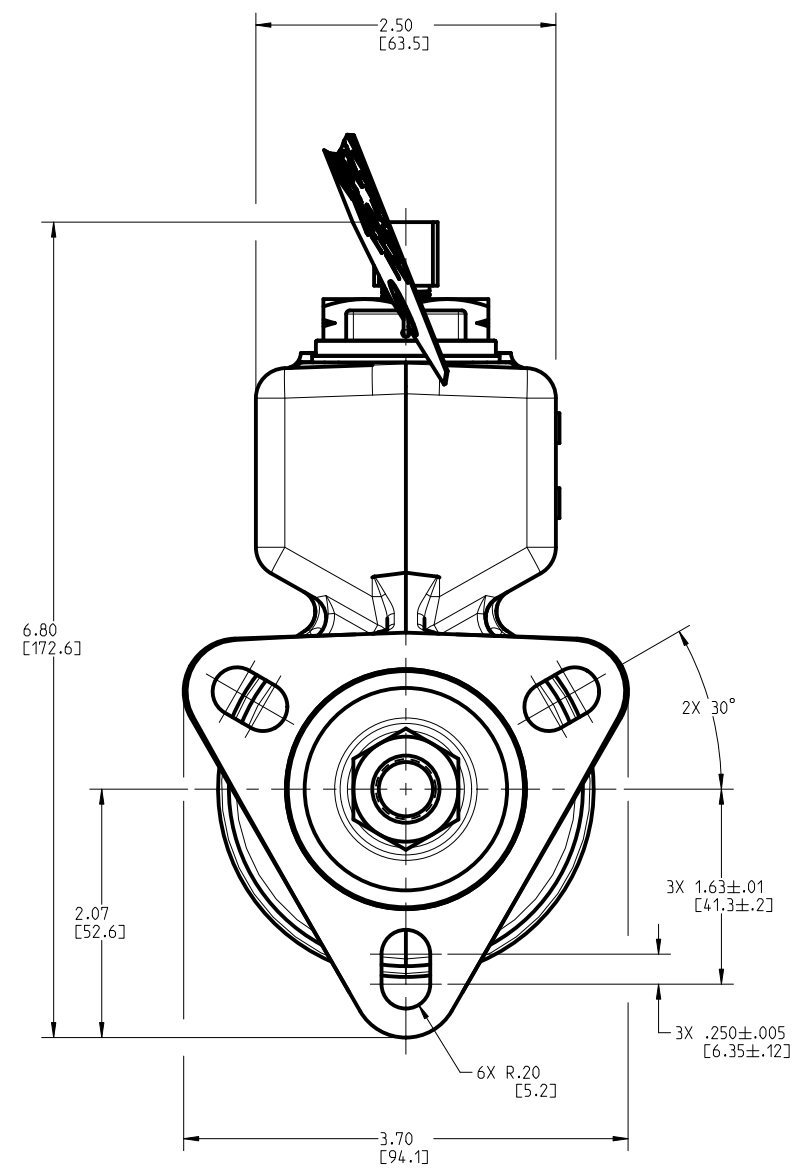


**WARNING**  
REMOVE THIS TAG  
AND CLIP BEFORE  
INSTALLATION



**NOTES:**

- FOR USE WITH DOT 3, 4 OR 5 BRAKE FLUID ONLY.
- DIMENSIONS MAY VARY BETWEEN UNITS AND ARE FOR REFERENCE PURPOSES ONLY. MILLIMETER VALUES MAY NOT BE AN EXACT CONVERSION OF INCH VALUES.
- BOOT AND PUSH ROD MAY BE SHIPPED UNASSEMBLED TO CYLINDER.
- REPAIR KIT P/N 02-001-014.
- SURFACE FINISH: PRIMER PAINT.
- WHEN CHECK VALVE AND SEAT ARE REMOVED, THE P/N IS 02-021-137.

**PERFORMANCE CHARACTERISTICS:**

- RELIEF VALVE SETTING IS 90 PSI.
- LOW PRESSURE BORE: Ø2.25 IN.
- HIGH PRESSURE BORE: Ø1.00 IN.
- STROKE: 2.00 IN.
- MAXIMUM DISPLACEMENT: 2.54 CUIN
- RESIDUAL CHECK VALVE PRESSURE: 10 PSI



COMPONENT AND SYSTEM RECOMMENDATIONS MADE BY MICO, INC. ARE BASED ON INFORMATION SUPPLIED BY POTENTIAL USER AND/OR SYSTEM DESIGNER. THE POTENTIAL USER AND/OR DESIGNER MUST MAKE FINAL ACCEPTANCE AND APPROVAL OF COMPONENTS AND SYSTEM AFTER TESTING PERFORMANCE ON AN ACTUAL APPLICATION FOR WHICH SYSTEM WAS DESIGNED.

MICO, INC. CLAIMS PROPRIETARY RIGHTS TO THE MATERIAL DISCLOSED IN THIS DOCUMENT. THIS DOCUMENT IS PROVIDED IN CONFIDENCE AND MAY NOT BE REPRODUCED OR DISCLOSED WITHOUT WRITTEN PERMISSION FROM MICO, INC. COPYRIGHT MICO, INC. ALL RIGHTS RESERVED.

SCALE 0.625	TITLE POWER CYLINDER	SIZE B	DRAWING NUMBER 02-020-137	REV J
DWN JJH 2016-04-14	APVD PROD ENGRG PJS 2016-04-27		CUSTOMER COPY	1 1
X NO	APVD ENGRG BSW 2016-04-19			