

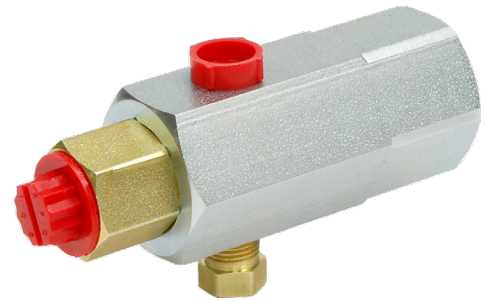


# PRODUCT BULLETIN

## Pressure Limiter

### DESCRIPTION

The ZF Pressure Limiter is a valve that provides protection against undesirable pressure increases in hydraulic systems. The predetermined pressure is set at the time of manufacture and is not field adjustable. A typical application would be where it is used to protect gauges. On some applications the valve's sensitivity to flow may alter the predetermined pressure setting. The pressure limiter is not designed to be used to limit service brake line pressure.



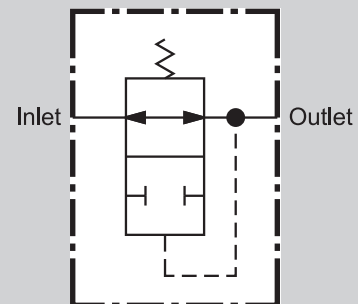
### FEATURES

- Specially designed pressure sensing valve automatically closes at a predetermined hydraulic pressure
- Available in shut-off pressure settings from 24.1-137.9 bar (350-2000 PSI)
- Compatible with brake fluid or mineral base hydraulic oil

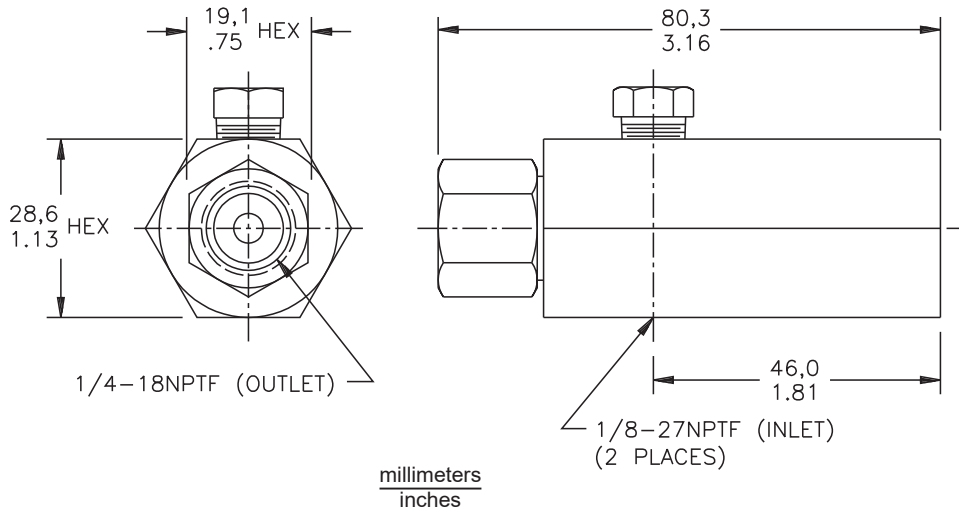
Model Number	* Pressure Range	
	bar	(PSI)
02-740-052	48.3-137.9	(700-2000)
02-740-070	24.1-41.4	(350-600)

\* Customer to specify desired setting within pressure range. All settings have a tolerance of  $\pm 5\%$ . Desired settings from 24.1-67.2 bar (350-975 PSI) are available in 1.7 bar (25 PSI) increments and settings greater than 69.0 bar (1000 PSI) are available in 3.5 bar (50 PSI) increments.

### Symbol



## Dimensional Data



This publication is not subject to any update service. Information contained in this publication was in effect at the time the publication was approved for printing and is subject to change without notice or liability. ZF Off-Highway Solutions Minnesota Inc. reserves the right to revise the information presented or to discontinue the production of parts described at any time.

